



This lovely one bedroomed retirement apartment enjoys a sunny south facing aspect with views over the communal gardens. Features include a nice lounge, fitted kitchen, double bedroom, shower room, lift access and communal parking area. OVER 65s ONLY



- Gas Central Heating
- Double Glazing
- Lounge 15' x 11'1
- Fitted Kitchen 10'1 x 6'
- Bedroom 11' x 10'9 (into wardrobes)
- Shower Room
- Well Tended Communal Gardens
- Communal Parking Area
- OVER 65s ONLY

ENTRANCE HALL

Coved and smooth plastered ceiling, access to loft space, entry phone, radiator, power points, fitted carpet.

LOUNGE

15' x 11'1 (4.57m' x 3.35m'0.30m)

Double glazed window to rear, coved and smooth plastered ceiling, radiator, power points, fitted carpet.

KITCHEN

10'1 x 6' (3.05m'0.30m x 1.83m')

Double glazed window to rear, coved and smooth plastered ceiling, range of base and eye level units with contrasting work surfaces, inset single drainer sink unit, integrated oven, hob and extractor, space for fridge/freezer and washing machine, wall mounted gas central heating boiler, part tiling to three walls, radiator, power points, vinyl flooring.

BEDROOM

11' x 10'9 (into wardrobes) (3.35m' x 3.05m'2.74m (into wardrobes))

Double glazed window to rear, coved and smooth plastered ceiling, range of fitted wardrobes to one wall, radiator, power points, fitted carpet.

SHOWER ROOM

Opaque double glazed window to side, coved and smooth plastered ceiling, suite comprising large shower cubicle, vanity unit with inset wash hand basin and low flush toilet, tiled walls, radiator, vinyl flooring.

EXTERIOR

Well tended communal gardens.
Communal parking area.

LEASE DETAILS AND SERVICE CHARGES

Approximately 79 years remaining on lease

Ground Rent: £100 per annum

Service Charges: £133.34 per month

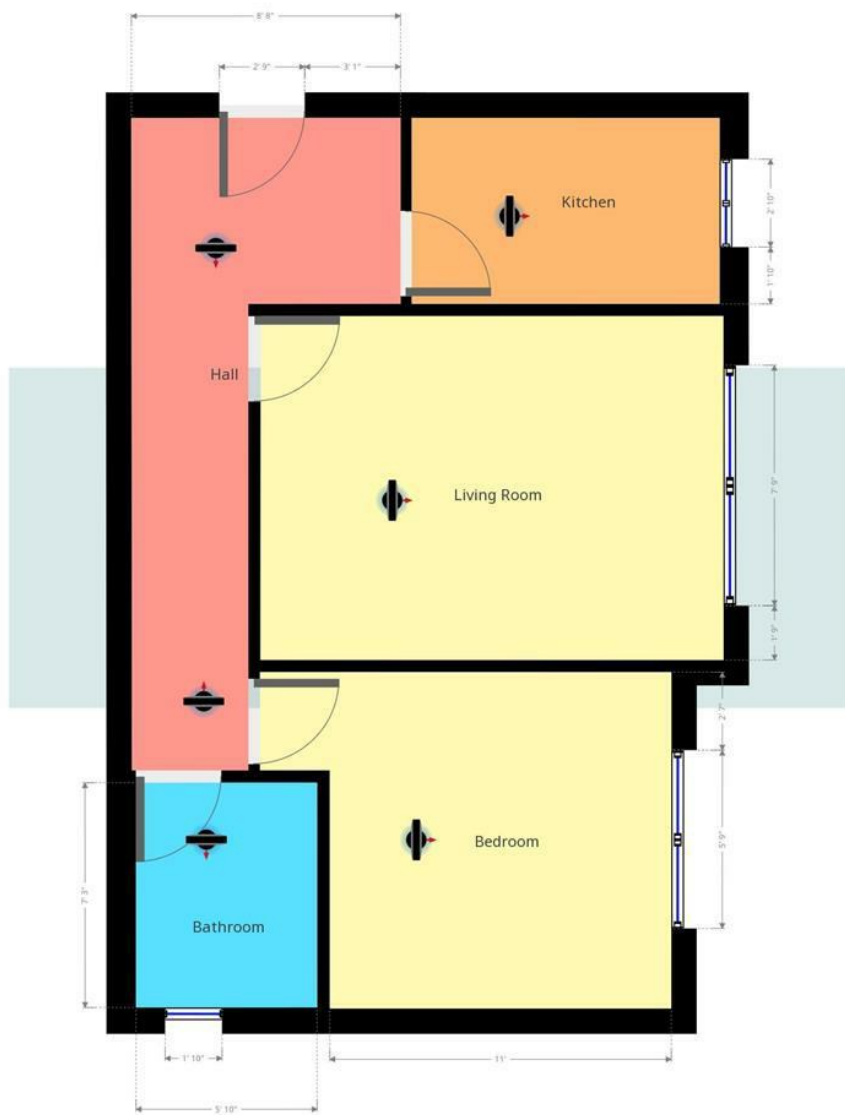












Kempsters Estate Agents take no responsibility for any error, omission, misstatement or use of data shown.
This plan is for illustrative purposes only and whilst every attempt has been made to ensure the accuracy of the floorplan shown, all measurements, positioning, fixtures, fittings and any other data shown are an approximate...

Disclaimer: This brochure is for illustrative purposes only and, whilst every attempt has been made to ensure accuracy. Kempsters Estate Agents Ltd take no responsibility for any error, omission, mis-statement or use of any of the information shown. No appliances or main services have been checked.

37 Orsett Road Grays, Essex RM17 5DS • Tel: 01375 394 732 • Email: sales@kempsters.com

