



Kempsters

Kempsters
ESTATE AGENTS

25 Albert Close
North Grays RM16 2RB

4

2

3

Asking price
£569,000

This spacious four bedroomed detached house is situated in a highly sought after location close to local shops and schools. The property offers flexible accommodation and features include three receptions, fitted kitchen, utility, en suite to bedroom one, sunny west facing rear garden, attached garage offering potential to create a ground floor bedroom if required (subject to planning permission), plus off road parking for three vehicles.



- Lounge 16'11 x 13'
- Dining Room 11'3 x 10'8
- Fitted Kitchen 12'7 x 10'8
- Utility Room 10'8 x 4'9
- Study 9' x 5'10
- Bedroom One 16'11 (into wardrobes) x 10'4 With En Suite
- Three Further Good Size Bedrooms
- Stylish Bathroom
- Sunny West Facing Rear Garden 27' x 40'
- Attached Garage Plus Off Road Parking For Three Vehicles



ENTRANCE HALL

Coved and textured ceiling, access to first floor, under stairs storage area, radiator, power points, laminate floor.

GROUND FLOOR CLOAKROOM

Opaque double glazed window to side, textured ceiling, suite comprising vanity unit with inset wash hand basin and low flush toilet, tiled walls, radiator, vinyl flooring.

DINING ROOM

11'3 x 10'8 (3.35m'0.91m x 3.05m'2.44m)

Double glazed windows to sides, coved and textured ceiling, radiator, power points, laminate floor.

LOUNGE

16'11 x 13' (4.88m'3.35m x 3.96m')

Double glazed window to front, double glazed French doors with matching side windows lead to rear garden, coved and textured ceiling, feature fireplace and chimney breast, radiator, power points, laminate floor.

KITCHEN

12'7 x 10'8 (3.66m'2.13m x 3.05m'2.44m)

Double glazed windows to rear and side, textured ceiling, range of base and eye level units with contrasting work surfaces, inset single drainer sink unit, integrated oven, hob, canopy with extractor, dishwasher and fridge, partly tiled walls, power points, laminate floor.

UTILITY ROOM

10'8 x 4'9 (3.05m'2.44m x 1.22m'2.74m)

Double glazed door to side, textured ceiling, range of base and eye level units with contrasting work surfaces, inset single drainer sink unit, integrated space for fridge/freezer, space for washing machine and tumble dryer, wall mounted gas central heating boiler, part tiling to two walls, power points, laminate floor.



Kempsters
ESTATE AGENTS

STUDY

9' x 5'10 (2.74m' x 1.52m'3.05m)

Double glazed window to rear, coved and textured ceiling, radiator, power points, laminate floor.

FIRST FLOOR LANDING

Coved and textured ceiling, access to loft space, built-in airing cupboard, power points, fitted carpet.

BEDROOM ONE

16'11 x 10'4 (4.88m'3.35m x 3.05m'1.22m)

Two double glazed windows to rear, coved and

textured ceiling, range of fitted wardrobes with matching dressing unit and bedside cabinets, large built-in storage cupboard, radiator, power points, fitted carpet.

EN SUITE

Opaque double glazed window to side, textured ceiling, suite comprising shower cubicle, vanity unit with inset wash hand basin and low flush toilet, full tiling to shower cubicle, remainder partly tiled, heated towel rail, tile effect laminate floor.



BEDROOM TWO

12'2 x 8'6 (3.66m'0.61m x 2.44m'1.83m)

Double glazed windows to front and side, coved and textured ceiling, radiator, power points, laminate floor.

BEDROOM THREE

13' x 7'11 (3.96m' x 2.13m'3.35m)

Double glazed window to rear, coved and textured ceiling, radiator, power points, laminate floor.

BEDROOM FOUR

9'5 x 8' (2.74m'1.52m x 2.44m')

Double glazed window to front, coved and textured ceiling, radiator, power points, laminate floor.

BATHROOM

Opaque double glazed windows to front and side, smooth plastered ceiling, suite comprising free standing bath with mixer tap and shower attachment, pedestal wash hand basin and low flush toilet, radiator with heated towel rail, tile effect laminate floor.

REAR GARDEN

27' x 40' (8.23m' x 12.19m')

Large patio area, shrub and flower bed, lawn area, concrete hard standing. Side access leads to:

FRONT GARDEN

Driveway providing off road parking for three vehicles and leading to:

ATTACHED GARAGE

With power and light.

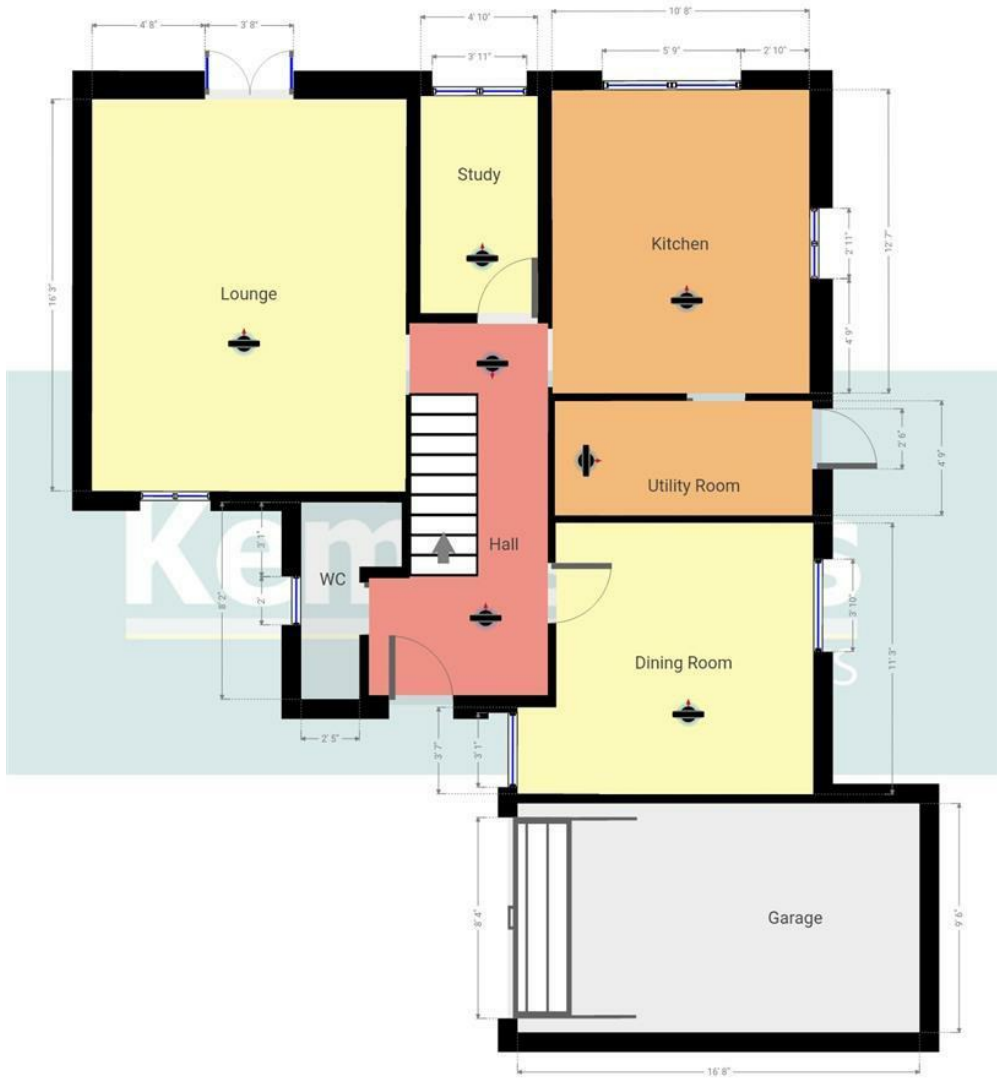












Kempsters Estate Agents take no responsibility for any error, omission, misstatement or use of data shown. This plan is for illustrative purposes only and whilst every attempt has been made to ensure the accuracy of the floorplan shown, all measurements, positioning, fixtures, fittings and any other data shown are an approximate interpretation for illustrative purposes only.

Kempsters Estate Agents take no responsibility for any error, omission, misstatement or use of data shown. This plan is for illustrative purposes only and whilst every attempt has been made to ensure the accuracy of the floorplan shown, all measurements, positioning, fixtures, fittings and any other data shown are an approximate interpretation for illustrative purposes only.

Disclaimer: This brochure is for illustrative purposes only and, whilst every attempt has been made to ensure accuracy. Kempsters Estate Agents Ltd take no responsibility for any error, omission, mis-statement or use of any of the information shown. No appliances or main services have been checked.

37 Orsett Road Grays, Essex RM17 5DS • Tel: 01375 394 732 • Email: sales@kempsters.com

