



Kempsters
ESTATE AGENTS

4 Juniper Drive
Brandon Groves South Ockendon RM15

5

2

2

Guide price
£485,000

GUIDE PRICE £485,000 - £500,000. This outstanding four bedroom detached house is situated in a lovely location within the popular Brandon Groves development. Features include a bright lounge, dining room, fitted kitchen/breakfast room, master bedroom with en suite and dressing room, family bathroom, secluded rear garden plus garage and further parking for three vehicles. **360 VIRTUAL TOUR AVAILABLE.**



- Lounge 14' x 11'4
- Dining room 10' x 8'5
- Fitted kitchen/breakfast room 16'1 x 12'2>7'8
- Ground floor cloakroom
- Master bedroom with en suite shower room and dressing room
- Three further good size bedrooms
- Family bathroom
- Well tended rear garden
- Garage and driveway providing off road parking for three vehicles

ENTRANCE HALL

Double glazed window to front, textured ceiling, access to first floor, power point, tiled floor.

GROUND FLOOR CLOAKROOM

Opaque double glazed window to front, textured ceiling, suite comprising wash hand basin and low flush toilet, radiator, tiled floor.

LOUNGE

Double glazed window to front, coved and smooth plastered ceiling, feature fireplace with inset coal effect fire, radiator, power points, luxury vinyl flooring. Open plan to:

DINING ROOM

Double glazed French doors lead to rear garden, coved and smooth plastered ceiling, radiator, power points, luxury vinyl flooring.

KITCHEN/BREAKFAST ROOM

Double glazed window to side, double glazed window and double glazed door lead to rear garden, coved and smooth plastered ceiling, large built-in under stairs storage cupboard with space for tumble dryer, range of base and eye level units with contrasting work surfaces, inset single drainer sink unit, integrated oven, hob and concealed extractor, space for washing machine and fridge/freezer, radiator, power points, tiled floor.

FIRST FLOOR LANDING

Double glazed window to front, textured ceiling, access to second floor, large built-in airing cupboard,, power point, fitted carpet.

BEDROOM ONE

Double glazed French doors with Juliette balcony to rear, coved and smooth plastered ceiling, radiator, power points, fitted carpet. Archway to:

DRESSING ROOM/ BEDROOM 5

Double glazed window to front, coved and smooth plastered ceiling, range of fitted wardrobes to one wall, radiator, power points, fitted carpet.

EN SUITE

Opaque double glazed window to rear, textured ceiling, extractor fan, suite comprising shower cubicle, wash hand basin and low flush toilet, radiator, shaver point, tiled floor.

BEDROOM FOUR

Double glazed window to front, coved and smooth plastered ceiling, radiator, power points, fitted carpet.



FAMILY BATHROOM

Opaque double glazed window to rear, textured ceiling with inset spotlights, extractor fan, suite comprising bath with mixer tap and shower attachment, wash hand basin and low flush toilet, tiling to bath area, shaver point, radiator, tiled floor.

SECOND FLOOR LANDING

Double glazed 'Velux' style window to rear, smooth plastered ceiling with inset spotlights, currently used as a study area, radiator, power point, fitted carpet.

BEDROOM TWO

Double glazed window to side, double glazed 'Velux' style window to rear, smooth plastered ceiling with inset spotlights, range of fitted wardrobes/cupboards to one wall, radiator, power points, fitted carpet.

BEDROOM THREE

Two double glazed windows to side, double glazed 'Velux' style window to rear, smooth plastered ceiling with inset spotlights, two built-in eaves storage cupboards, further built-in storage cupboard, power points, fitted carpet.

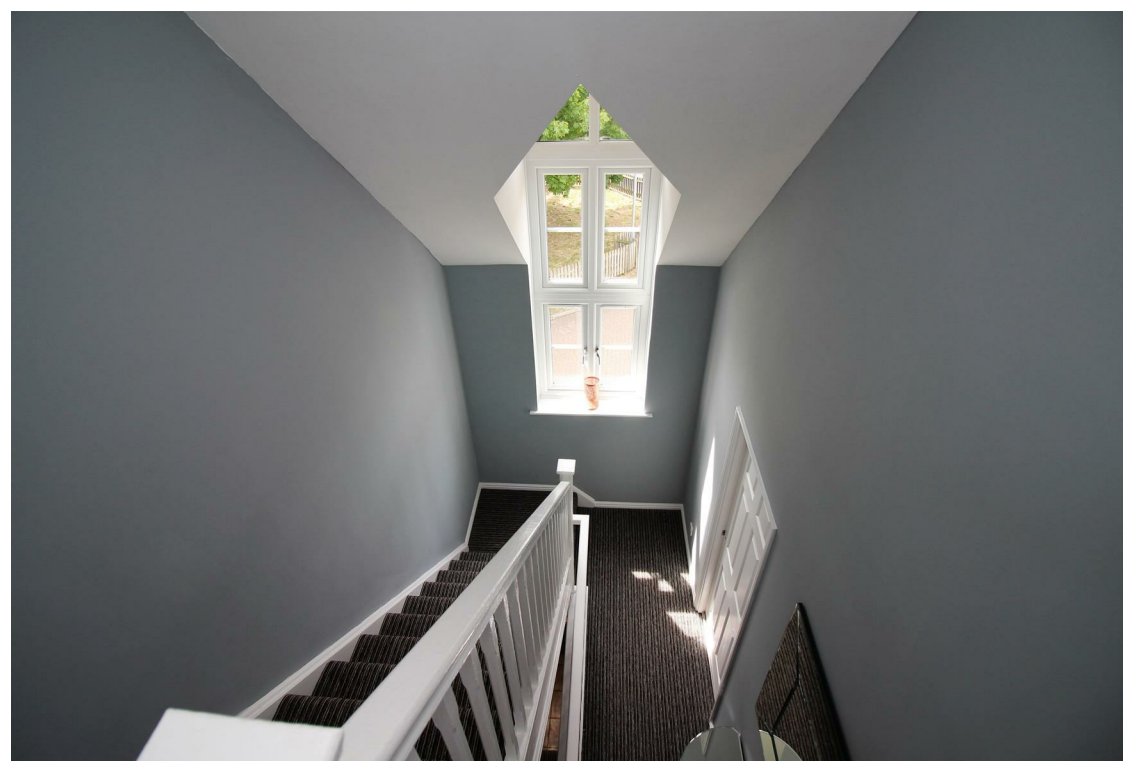
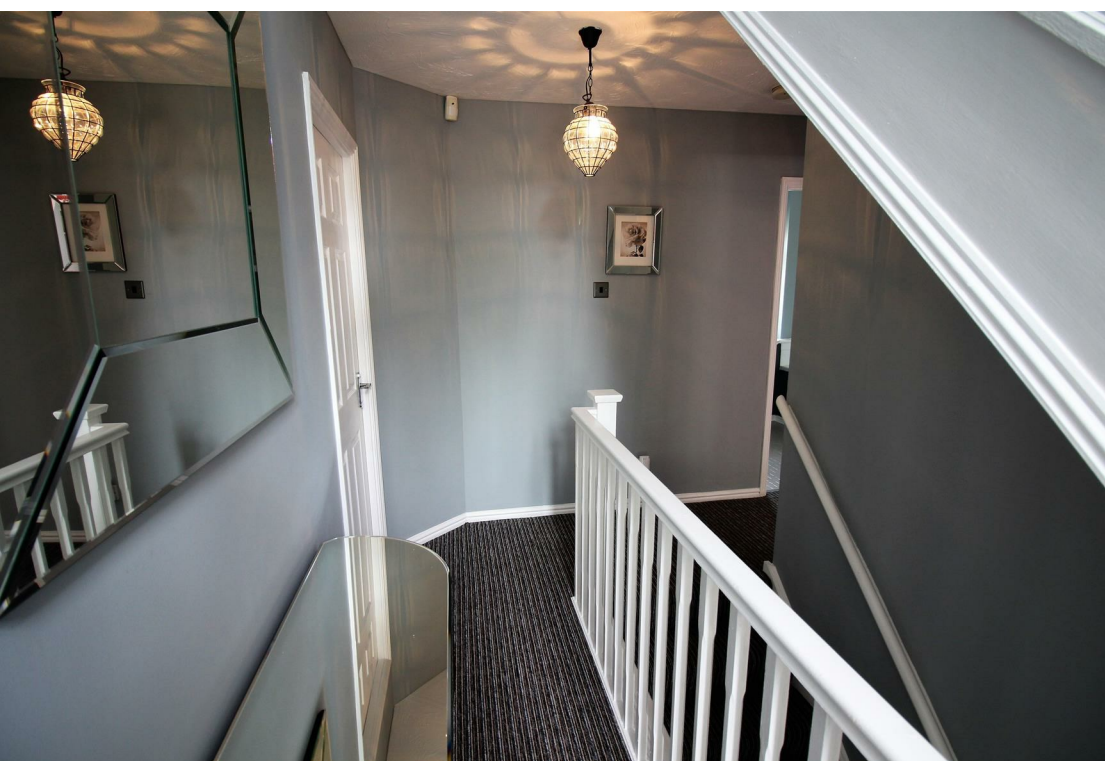
SECLUDED REAR GARDEN

Large patio area,, neatly laid lawn area with mature shrub borders, outside tap, outside light, personal door to:

GARAGE

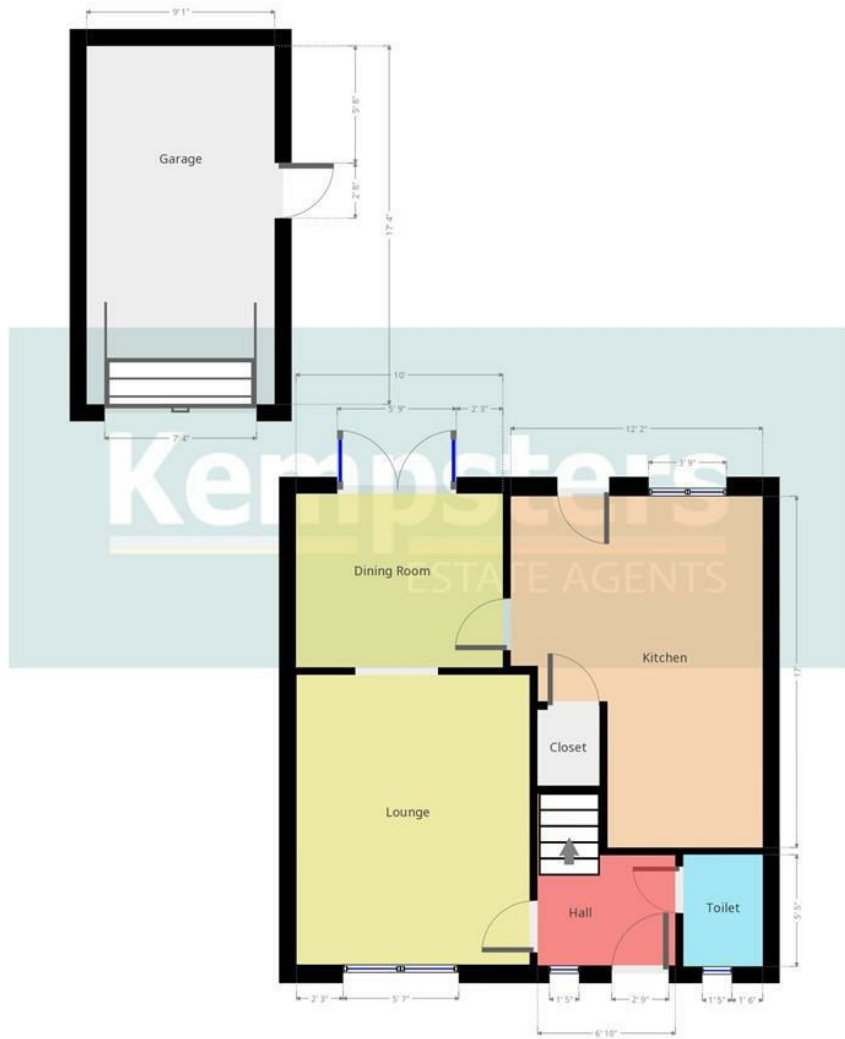
FRONT GARDEN











Kempsters Estate Agents take no responsibility for any error, omission, misstatement or use of data shown. This plan is for illustrative purposes only and whilst every attempt has been made to ensure the accuracy of the floorplan shown, all measurements, positioning, fixtures, fittings and any other data shown are an approximate...



Kempsters Estate Agents take no responsibility for any error, omission, misstatement or use of data shown. This plan is for illustrative purposes only and whilst every attempt has been made to ensure the accuracy of the floorplan shown, all measurements, positioning, fixtures, fittings and any other data shown are an approximate...

Disclaimer: This brochure is for illustrative purposes only and, whilst every attempt has been made to ensure accuracy. Kempsters Estate Agents Ltd take no responsibility for any error, omission, mis-statement or use of any of the information shown. No appliances or main services have been checked.

37 Orsett Road Grays, Essex RM17 5DS • Tel: 01375 394 732 • Email: sales@kempsters.com

