



**Kempsters**  
ESTATE AGENTS

10 Rosebery Road  
Grays RM17 5YT

 3  1  1

Asking price  
**£285,000**



**This three bedroom house is situated in a great location within easy walking distance of Grays town centre. Features include a spacious lounge, fitted kitchen/breakfast room, shower room, rear garden approx 38' plus double width garage. 360 VIRTUAL TOUR AVAILABLE**



- Lounge 15'4 x 11'9
- Fitted kitchen/breakfast room 17'9 x 8'11 > 8'1
- Bedroom one 12'4 x 12'3 > 10'6
- Bedroom two 11'3 x 10'5
- Bedroom three 7'11 x 6'11
- Shower room
- Rear garden approx 38' (including garage)
- Double width garage



### ENTRANCE HALL

Coved and textured ceiling, access to first floor, under stairs storage cupboard, radiator, vinyl floor covering.

### LOUNGE

15'4 x 11'9 (4.67m x 3.58m)

Double glazed bay window to front, coved and textured ceiling, radiator, power points, fitted carpet.

### KITCHEN/BREAKFAST ROOM

17'9 x 8'11 reducing to 8'1 (5.41m x 2.72m reducing to 2.46m)

Double glazed windows and partially opaque double glazed door lead to rear garden, coved and textured ceiling, range of base level units with contrasting work surfaces, inset single drainer sink unit, integrated oven, hob, canopy with extractor, fridge, freezer and washing machine, partly tiled walls, power points, vinyl floor covering.

### FIRST FLOOR LANDING

Coved and textured ceiling, access to loft space, which we understand is boarded with light and ladder, fitted carpet.

### BEDROOM ONE

12'4 x 12'3 reducing to 10'6 (3.76m x 3.73m reducing to 3.20m)

Double glazed window to rear, coved and textured ceiling, range of fitted wardrobes to one wall, radiator, power points, fitted carpet.

### BEDROOM TWO

11'3 x 10'5 (3.43m x 3.18m)

Double glazed window to front, coved and textured ceiling, range of fitted wardrobes to one wall, radiator, power points, fitted carpet.

### BEDROOM THREE

7'11 x 6'11 (2.41m x 2.11m)

Double glazed window to front, coved and textured ceiling, radiator, power points, fitted carpet.



### SHOWER ROOM

Opaque double glazed window to rear, coved and textured ceiling, suite comprising shower cubicle, vanity unit with inset wash hand basin and low flush toilet, heated towel rail, tiled walls, tiled floor.

With wall surround.

### REAR GARDEN

Laid to patio, door to:

### DOUBLE WIDTH GARAGE

With power, light and electric door, approached via rear vehicular access.

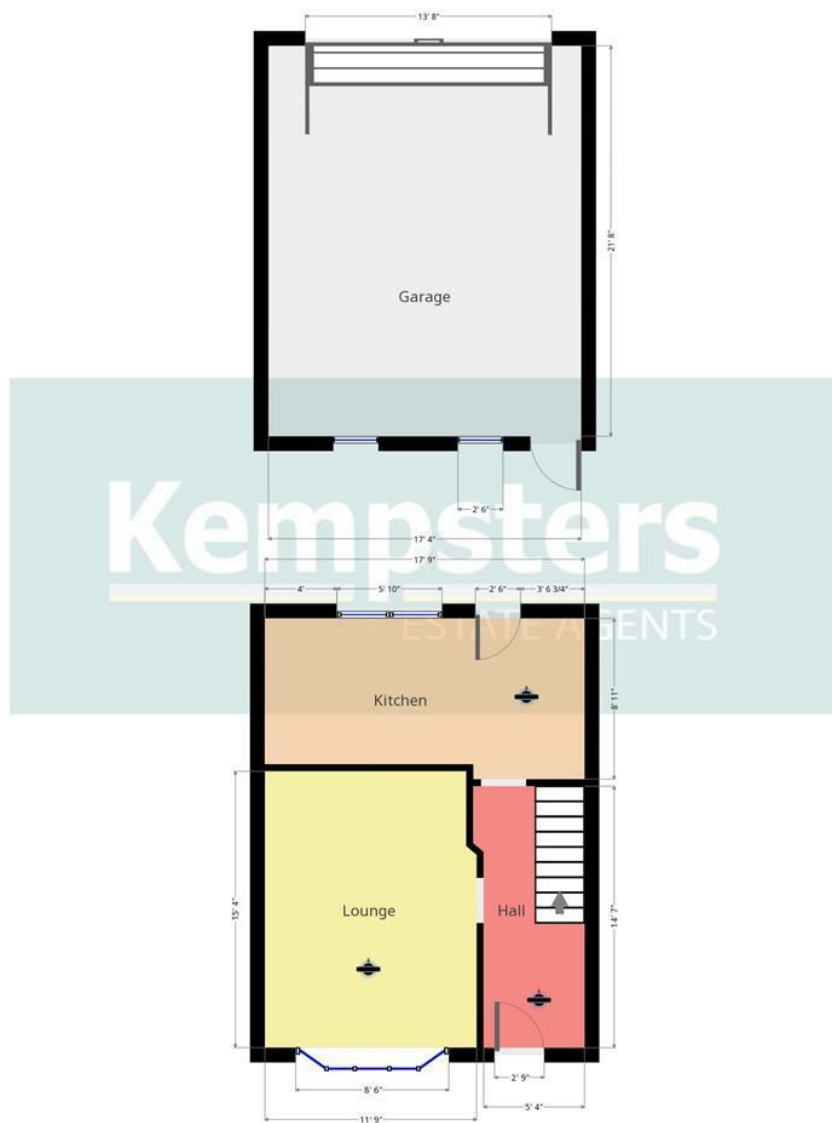
### FRONT GARDEN



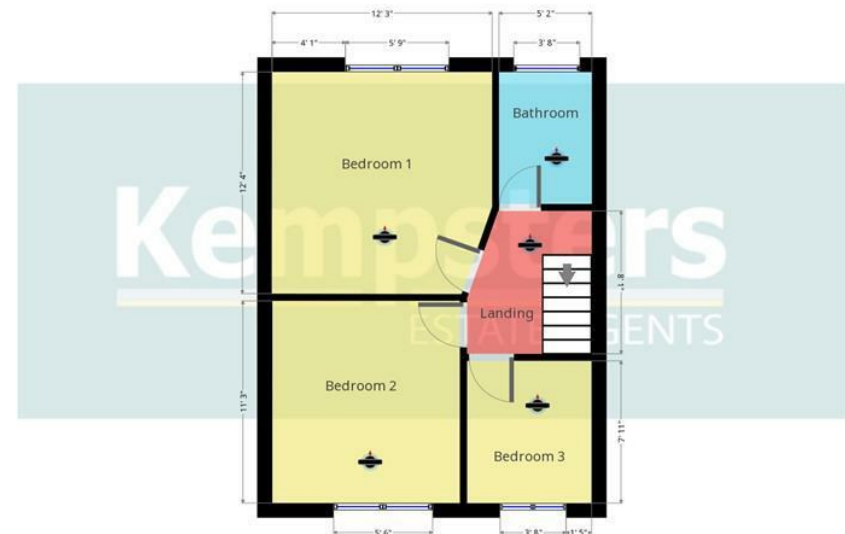








Kempsters Estate Agents take no responsibility for any error, omission, misstatement or use of data shown. This plan is for illustrative purposes only and whilst every attempt has been made to ensure the accuracy of the floorplan shown, all measurements, positioning, fixtures, fittings and any other data shown are an approximate ...



Kempsters Estate Agents take no responsibility for any error, omission, misstatement or use of data shown. This plan is for illustrative purposes only and whilst every attempt has been made to ensure the accuracy of the floorplan shown, all measurements, positioning, fixtures, fittings and any other data shown are an approximate ...

Disclaimer: This brochure is for illustrative purposes only and, whilst every attempt has been made to ensure accuracy. Kempsters Estate Agents Ltd take no responsibility for any error, omission, mis-statement or use of any of the information shown. No appliances or main services have been checked.

37 Orsett Road Grays, Essex RM17 5DS • Tel: 01375 394 732 • Email: [sales@kempsters.com](mailto:sales@kempsters.com)

